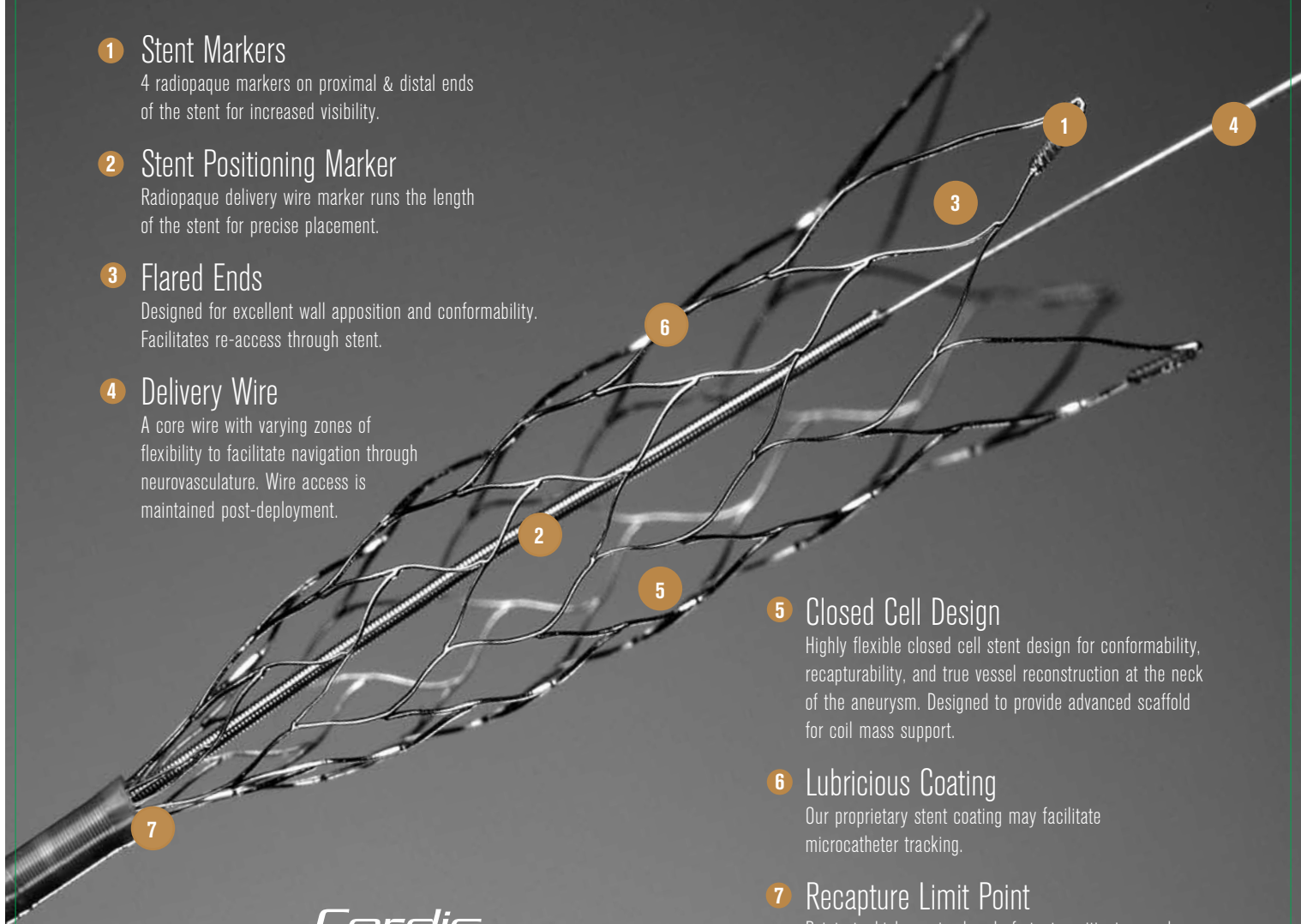




## Key Features

### Recapture & Reposition

- 1 Stent Markers**  
4 radiopaque markers on proximal & distal ends of the stent for increased visibility.
- 2 Stent Positioning Marker**  
Radiopaque delivery wire marker runs the length of the stent for precise placement.
- 3 Flared Ends**  
Designed for excellent wall apposition and conformability. Facilitates re-access through stent.
- 4 Delivery Wire**  
A core wire with varying zones of flexibility to facilitate navigation through neurovasculature. Wire access is maintained post-deployment.



- 5 Closed Cell Design**  
Highly flexible closed cell stent design for conformability, recapturability, and true vessel reconstruction at the neck of the aneurysm. Designed to provide advanced scaffold for coil mass support.
- 6 Lubricious Coating**  
Our proprietary stent coating may facilitate microcatheter tracking.
- 7 Recapture Limit Point**  
Point at which proximal end of stent positioning marker aligns with distal marker of PROWLER® SELECT™ Plus Microcatheter to visually indicate recapturability limit.

**Cordis**  
**enterprise™**  
vascular reconstruction device



## Product Specifications

### Product Specifications

CORDIS ENTERPRISE™ VRD				
Diameter (mm)	Length (mm)	Recommended Parent Vessel Diameter (mm)	% Length Foreshortening	
			%	mm
4.5	14	3 - 4	6.7	1.1
4.5	22	3 - 4	7.7	1.9
4.5	28	3 - 4	9.8	3.2
4.5	37	3 - 4	10.9	4.7

### Microcatheter Compatibility

PROWLER® SELECT™ Plus					
Shape	OD (prox./distal)	ID (inches)	Usable Length (cm)	Distal Length (cm)	Tip Markers
Straight	2.8F/2.3F	0.021	150	5	2
45	2.8F/2.3F	0.021	150	5	2
90	2.8F/2.3F	0.021	150	5	2
J	2.8F/2.3F	0.021	150	5	2

PROWLER® SELECT™ Plus Microcatheter is the only microcatheter tested for compatibility with the CORDIS ENTERPRISE™ VRD. The CORDIS ENTERPRISE™ VRD requires a 0.021" inner diameter.

### Ordering Information

CORDIS ENTERPRISE™ VRD		
Unconstrained Stent Diameter (mm)	Unconstrained Stent Length (mm)	Catalog Codes
4.5	14	ENC451412
4.5	22	ENC452212
4.5	28	ENC452812
4.5	37	ENC453712

PROWLER® SELECT™ Plus	
Shape	Catalog Codes
Straight	606-S255X
45	606-S255FX
90	606-S255MX
J	606-S255JX

## Product Specifications

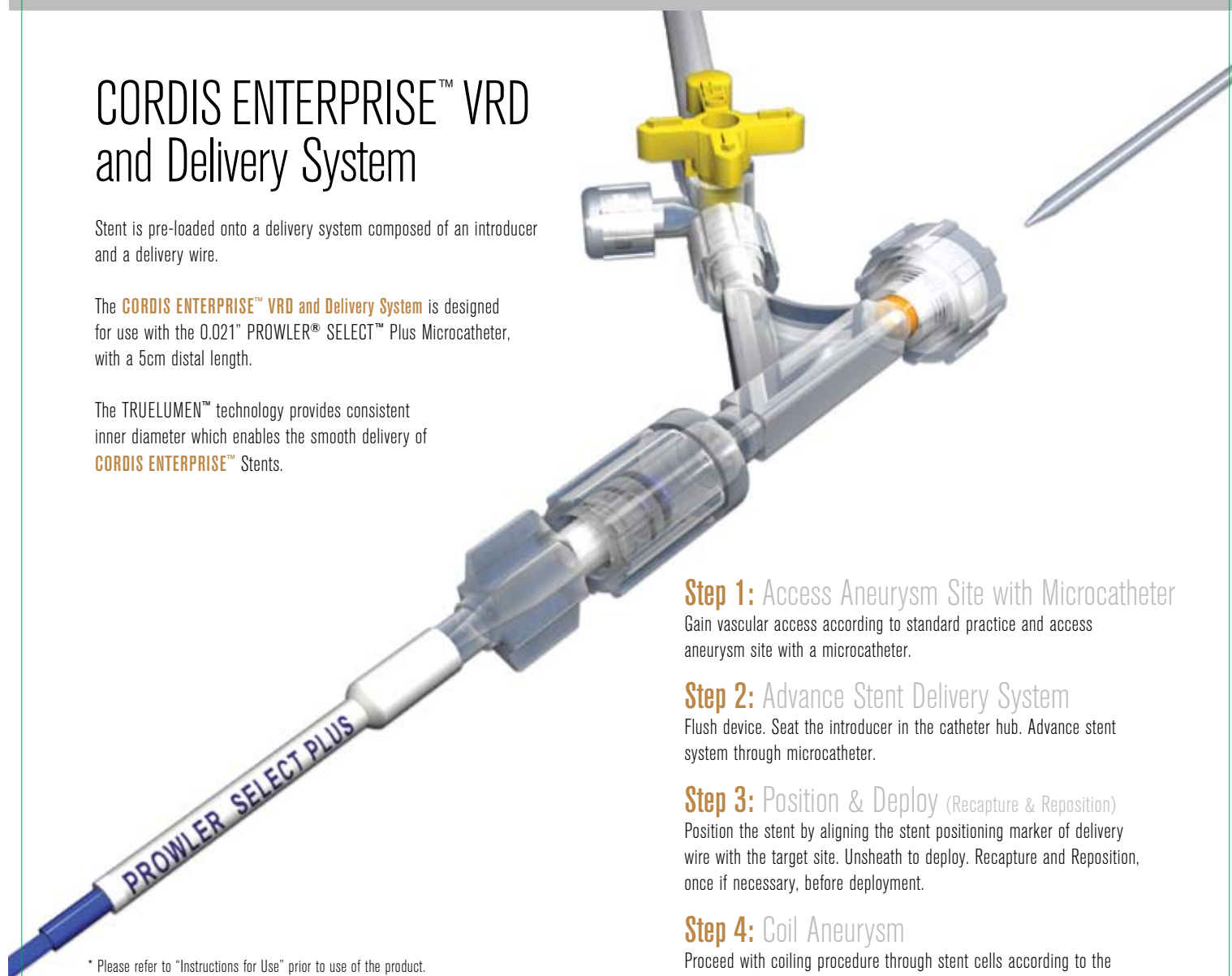
### Easy-to-Use Configuration\*

## CORDIS ENTERPRISE™ VRD and Delivery System

Stent is pre-loaded onto a delivery system composed of an introducer and a delivery wire.

The **CORDIS ENTERPRISE™ VRD and Delivery System** is designed for use with the 0.021" PROWLER® SELECT™ Plus Microcatheter, with a 5cm distal length.

The TRUELUMEN™ technology provides consistent inner diameter which enables the smooth delivery of **CORDIS ENTERPRISE™** Stents.



#### Step 1: Access Aneurysm Site with Microcatheter

Gain vascular access according to standard practice and access aneurysm site with a microcatheter.

#### Step 2: Advance Stent Delivery System

Flush device. Seat the introducer in the catheter hub. Advance stent system through microcatheter.

#### Step 3: Position & Deploy (Recapture & Reposition)

Position the stent by aligning the stent positioning marker of delivery wire with the target site. Unsheath to deploy. Recapture and Reposition, once if necessary, before deployment.

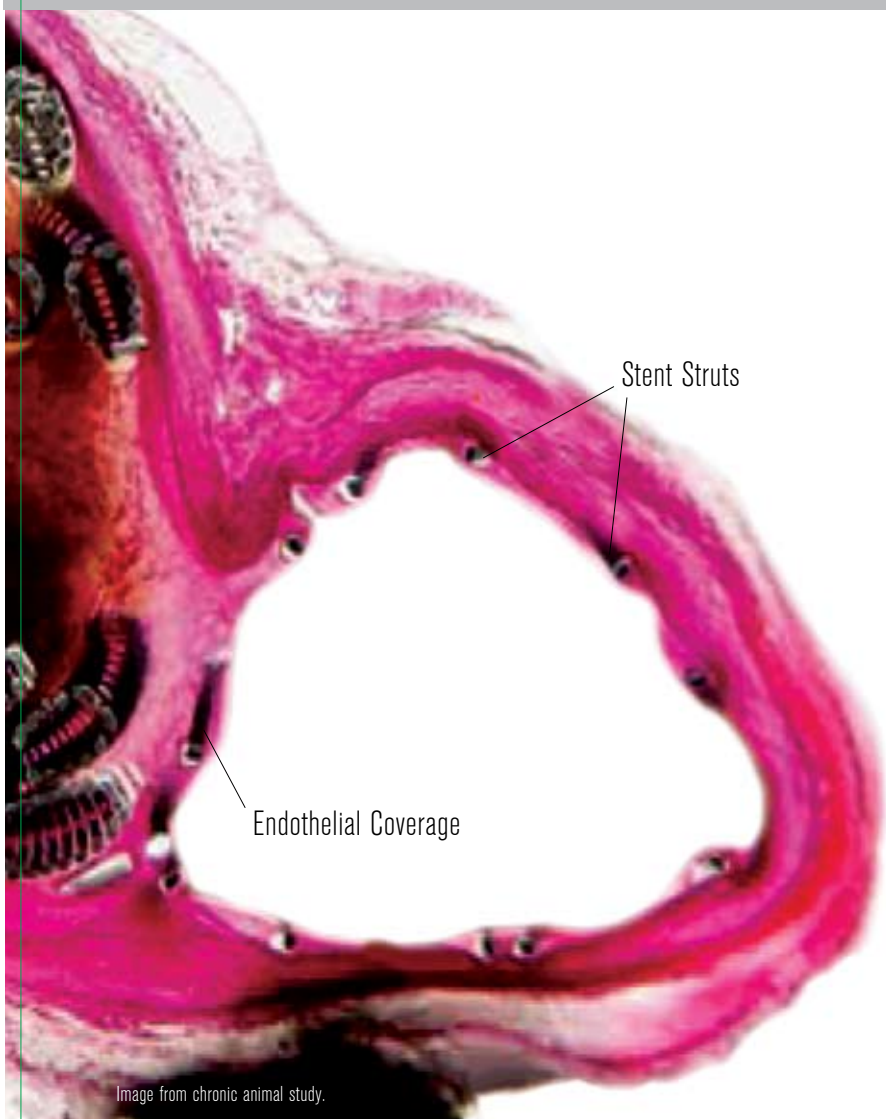
#### Step 4: Coil Aneurysm

Proceed with coiling procedure through stent cells according to the coil "Instructions for Use".

\* Please refer to "Instructions for Use" prior to use of the product. Also available at [www.cordislabeling.com](http://www.cordislabeling.com).

### Confidence in Data

Supported by the following technical feasibility characteristics.



#### Precise Placement

96.8% successful stent placement with complete neck coverage and parent artery patency in clinical trial.<sup>1</sup>

#### Excellent Wall Apposition

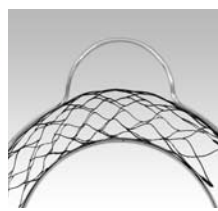
Closed cell design for conformability and true vessel reconstruction at the neck of the aneurysm. The ends of the stent are flared and are designed to enhance apposition of the implanted stent to the wall of the vessel and to facilitate re-access through the stent.

Results of in-vivo chronic animal evaluation study demonstrates CORDIS ENTERPRISE™ Stents can be accurately positioned across the neck of an aneurysm and completely endothelialized within 30 days.<sup>2</sup>

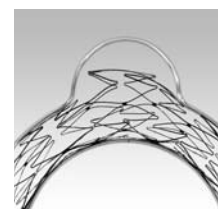
#### Outstanding Coil Mass Support

Closed cell stent design provides advanced scaffold for outstanding coil mass support.

Animal explants and feasibility clinical trial experience show that the CORDIS ENTERPRISE™ VRD satisfactorily maintains the coil mass deposited within the aneurysm.<sup>1,2</sup>



Closed Cell



Open Cell

Image from chronic animal study.

<sup>1</sup> As assessed angiographically by independent core lab (EU Clinical Trial Report, n=31).  
<sup>2</sup> Enterprise Chronic Animal Study Final Report, (n=20).

## Select Clinical Cases

### Case 1

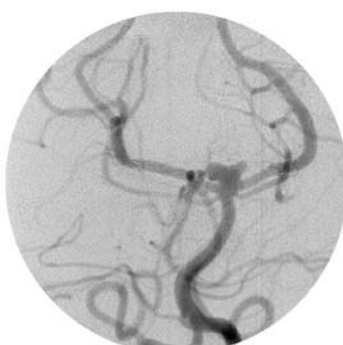


Pre-Embolization

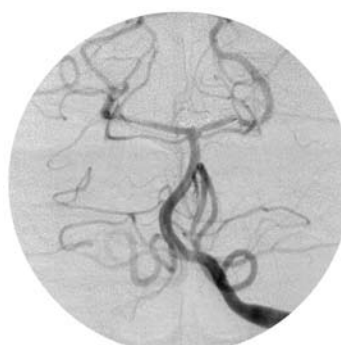


Post-Embolization

### Case 2



Pre-Embolization



Post-Embolization

Angiographic images from clinical trial.