

CODMAN® BACTISEAL™ EVD CATHETER

The Anti-Microbial Technology You Demanded for CSF Drainage

A technically innovative anti-microbial impregnated catheter for external CSF drainage which reduces gram positive bacteria on catheter tube surfaces.

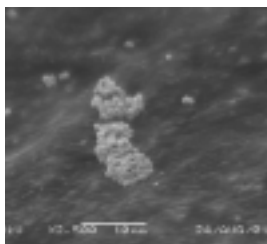
ADDRESSING YOUR EVD COMPLICATIONS

- Treated with the patented BACTISEAL Advanced Impregnation Process
- Reducing the potential for bacterial colonization on inner lumen and exterior catheter wall
- Soft, flexible, pliable silicone catheters
- Depth markings for accurate placement
- Requires no technique change

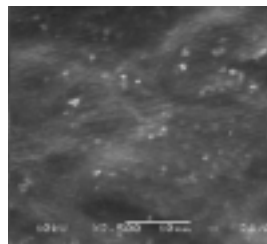
BACTISEAL Antibiotic Impregnated Silicone Matrix

Gradual Drug Release

CSF Flow



Control catheter¹
Coagulase-negative staphylococci on the surface of the lumen of an untreated catheter in the in vitro model.



BACTISEAL catheter¹
Lumen surface of a BACTISEAL catheter following two 14-day challenges in the in vitro model. No live bacteria are observed.

Codman
a Johnson & Johnson company

CODMAN BACTISEAL EVD CATHETER

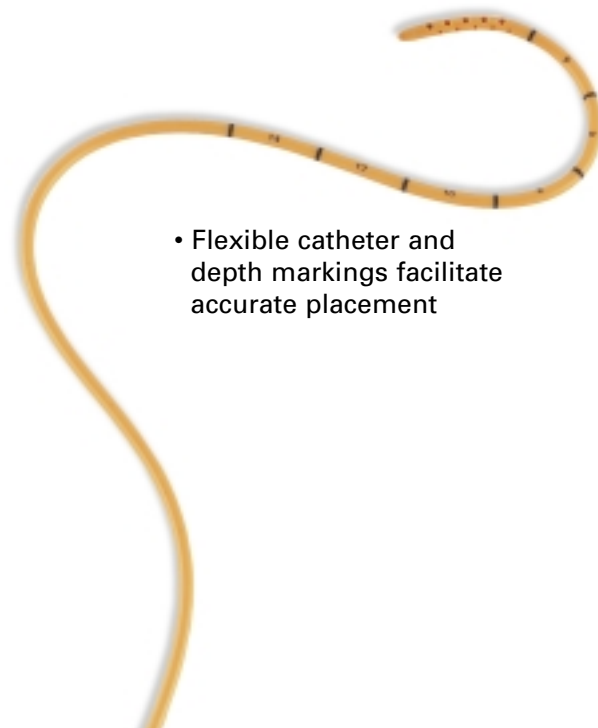
- **Treated with the patented BACTISEAL Advanced Impregnation Process (AIP):**
The CODMAN BACTISEAL EVD Catheter has two antibiotics impregnated throughout the silicone matrix. The genius of the BACTISEAL AIP lies in the unique manner in which the silicone matrix is “spread” during manufacturing to allow the infusion of antibiotics.
- **Reducing the potential for bacterial colonization on inner lumen and exterior catheter wall:**
The BACTISEAL EVD catheter slowly diffuses a combination of powerful antibiotics -- .15% Clindamycin and .054% Rifampicin - so that the antibiotics reach all catheter surfaces at low toxicity risk levels (less than a daily pediatric dose).
Both the inner lumen and the exterior catheter wall are supplied up to 28 days with antibiotic concentrations that protect against bacterial colonization.
- **Soft, flexible, pliable silicone catheters:**
The BACTISEAL EVD catheter was designed with the Neurosurgeon in mind. The softness and pliability of the silicone in the CODMAN BACTISEAL EVD catheter minimize tissue trauma during placement, management and explant of the catheter. The flexibility of the CODMAN BACTISEAL EVD accommodates the normal tunneling technique and conforms to underlying anatomy at the burr hole exit site.
- **Depth markings for accurate placement:**
To help gauge accurate placement in the ventricle, the BACTISEAL EVD Catheter has numeric depth markings. The markings are measured in centimeters from proximal tip, beginning at 3cm and ending at 15cm.



Packaged individually with tunneling trocar and connector.

ORDERING INFORMATION

82-1745 CODMAN BACTISEAL EVD Catheter Set



- Flexible catheter and depth markings facilitate accurate placement

Codman
a *Johnson & Johnson* company

For more information, contact your Codman Sales Representative

325 PARAMOUNT DRIVE • RAYNHAM, MA 02767 • (508) 880-8100
FOR PRODUCT INFORMATION, CALL: (800) 225-0460 • www.codmanjnj.com

References

1. Codman in house testing reports, TR2213 and PVER99-133 Addendum.