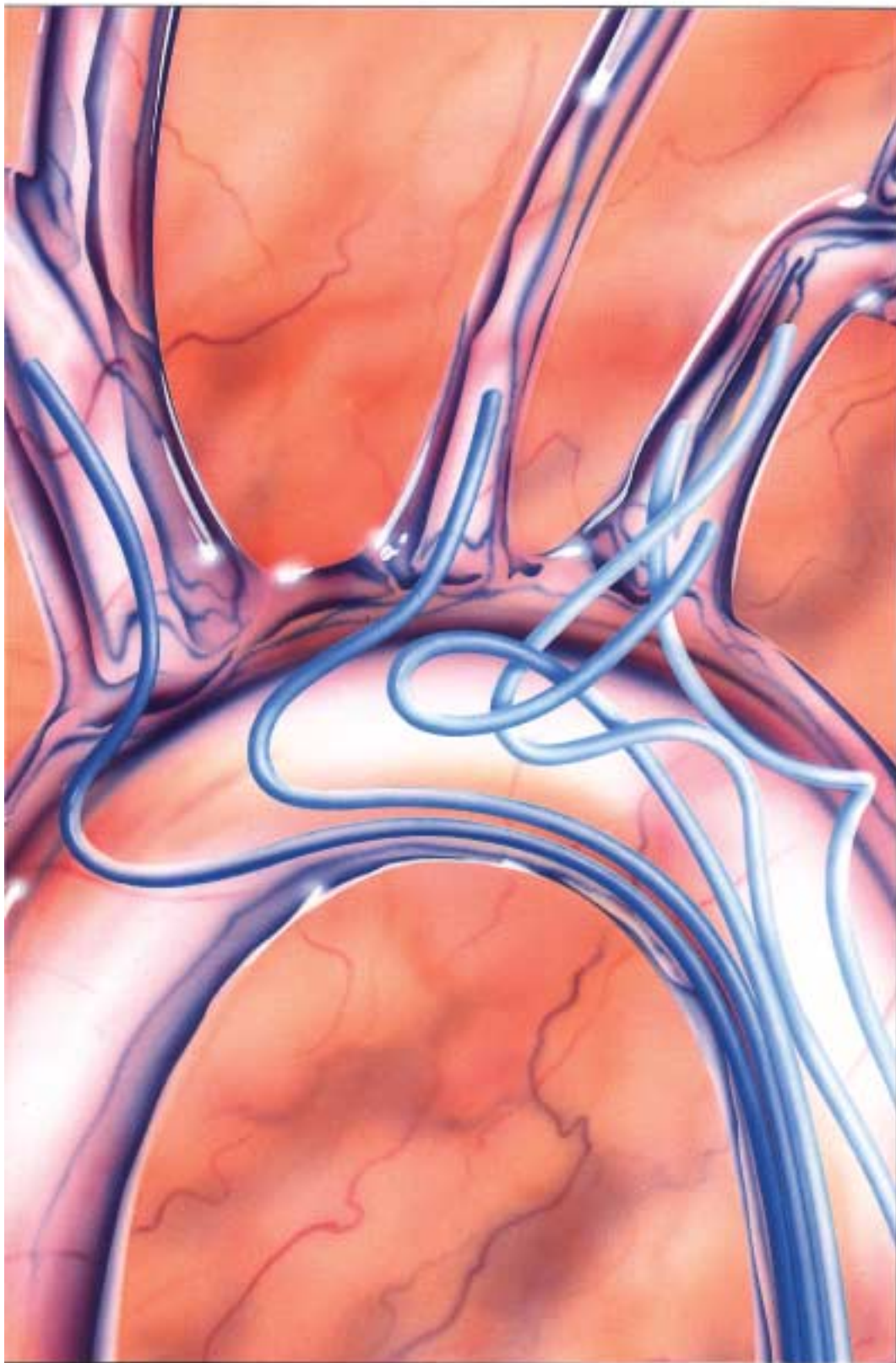


DIAGNOSTIC CATHETERS



Super Torque Braided F5 Catheter

"Increases safety, enhances
precision, speeds peripheral
angiography"

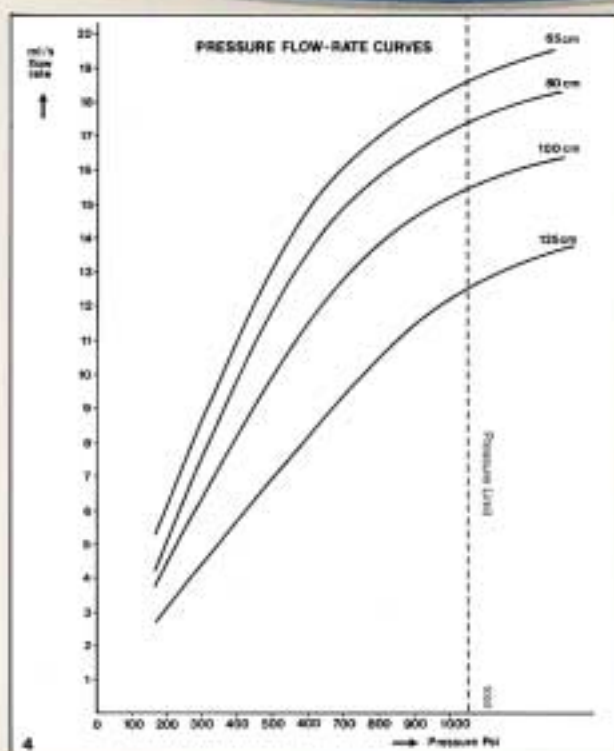
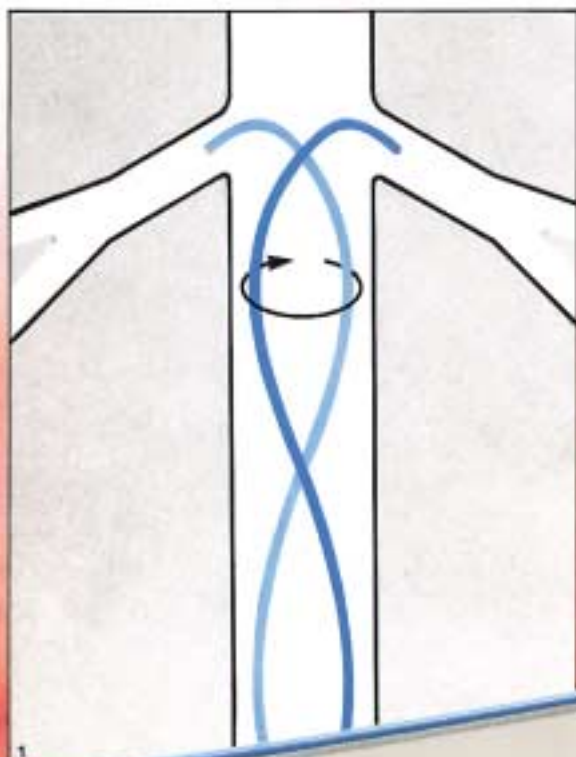
Cordis

a Johnson & Johnson company

ENDOVASCULAR

Super Torque catheter:

- Braided for excellent torque control
- Superb shape retention for easy positioning
- True French 5.0 with handling characteristics of standard Ducor catheters
- Excellent radiopacity for easier visualisation
- Outstanding images owing to higher flow rate
- Soft atraumatic tip
- Permits out-patient treatment
- Fast haemostasis reduces procedure time
- High pressure resistance for enhanced patient safety
- Unmatched kink resistance and pushability



True French 5 catheter

The Cordis Super Torque Braided French 5 catheter simplifies catheterization – leading to faster, more precise peripheric angiography. A true French 5.0 catheter (1.65 mm diameter), its small size ensures less traumatic angiography. This leads to important diagnostic benefits and even greater patient safety.



Greater manoeuvrability

Excellent torque control and kink resistance of the Super Torque catheter enhance manoeuvrability (illustration 1). Superior pushability is imparted by the braided shaft, giving a sure, predictable response to positioning movements.

Multipurpose A-2



Femoral-Renal A-1

Femoral-Renal A-2

Femoral-Visceral A-1
"Cobra"

Femoral-Visceral A-2
"Cobra"

Femoral-Visceral C
(J-curve)

Femoral-Visceral B
"Shepherd Hook"

efficient problem-free diagnosis



Superb shape retention

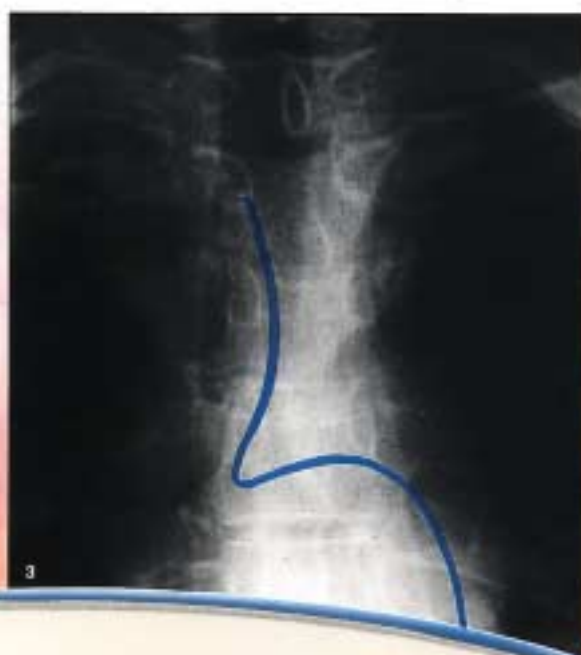
The Super Torque's special atraumatic tip minimises tissue damage and blood loss, while its superb shape retention further eases catheter placement and reduces recoil (illustration 2).

Better visibility on fluoroscope

An important feature of the Super Torque is high radiopacity of the catheter tip and shaft, making it easier to visualise on the fluoroscope (illustration 3). Excellent images can be obtained with or without DSA equipment and selective procedures.

Patient safety

An improved pressure resistance of 1,050 psi provides added patient safety. It allows high flow rates, cutting the time needed for injection of contrast medium (see figure 4).



Low treatment costs

The Super Torque model minimises hospitalisation costs as it enables treatment to be carried out on an outpatient basis.

Cordis system offers integrated approach

The Super Torque catheter is available in the standard Cordis range of lengths and tip configurations. Customised versions can also be supplied on request. All are compatible with the wide selection of Cordis angiographic accessories, including sheath introducers, guide wires, needles and dilators, etc.














Cordis-Cerebral B
"Dewinder"

Femoral-Cerebral C

Femoral-Cerebral A
"Headhunter"

Super Torque Braided French 5 Catheter

Specification

	Colour Code	Flow rate ml/sec	Pressure limit (psi)	Guide Wire Dia	Side Holes	Length	Catalog Number
	*	17	1,050	.035"	2	80 cm	532-506
	*	15	1,050	.035"	2	100 cm	532-507
	*	12	1,050	.035"	2	125 cm	532-508
	*	17	1,050	.035"	0	80 cm	532-509
	*	18	1,050	.035"	2	65 cm	532-510
	*	17	1,050	.035"	2	80 cm	532-511
	*	18	1,050	.035"	0	65 cm (I)	532-512
	*	18	1,050	.035"	0	65 cm (II)	532-513
	*	18	1,050	.035"	0	65 cm (III)	532-514
	*	18	1,050	.035"	2	65 cm (I)	532-515
	*	18	1,050	.035"	2	65 cm (II)	532-516
	*	18	1,050	.035"	2	65 cm (III)	532-517
	*	18	1,050	.035"	0	65 cm (I)	532-521
	*	18	1,050	.035"	0	65 cm (II)	532-522
	*	18	1,050	.035"	0	65 cm (III)	532-523
	*	18	1,050	.035"	0	65 cm (I)	532-518
	*	18	1,050	.035"	0	65 cm (II)	532-519
	*	15	1,050	.035"	0	100 cm (I)	532-501
	*	15	1,050	.035"	0	100 cm (II)	532-502
	*	15	1,050	.035"	0	100 cm (III)	532-503
	*	15	1,050	.035"	2	100 cm (I)	532-546
	*	15	1,050	.035"	2	100 cm (II)	532-547
	*	15	1,050	.035"	0	100 cm (I)	532-504
	*	15	1,050	.035"	0	100 cm (III)	532-505
	*	15	1,050	.035"	0	100 cm (IV)	532-520
	*	15	1,050	.035"	0	100 cm (III)	532-593
	*	15	1,050	.035"	0	100 cm	532-571
	*	19	1,050	.035"	0	65 cm	532-589
	*	17	1,050	.035"	0	80 cm	532-578
	*	15	1,050	.035"	0	100 cm	532-579
	*	19	1,050	.035"	2	65 cm	532-591
	*	15	1,050	.035"	2	100 cm	532-592
	*	19	1,050	.035"	0	65 cm	532-576

Important information: Prior to use, refer to the "Instructions for use" supplied with these devices for indications, contraindications, side effects, suggested procedures, warnings and precautions. As part of the Covid policy of continuous product development we reserve the right to change product specifications without prior notification.

Europe
Tel: +32 2 352 14 11
Fax: +32 2 352 15 00

© Johnson & Johnson Medical N/SA • August 1998 • ZE-800-0097-6

